

OBIEKT 61

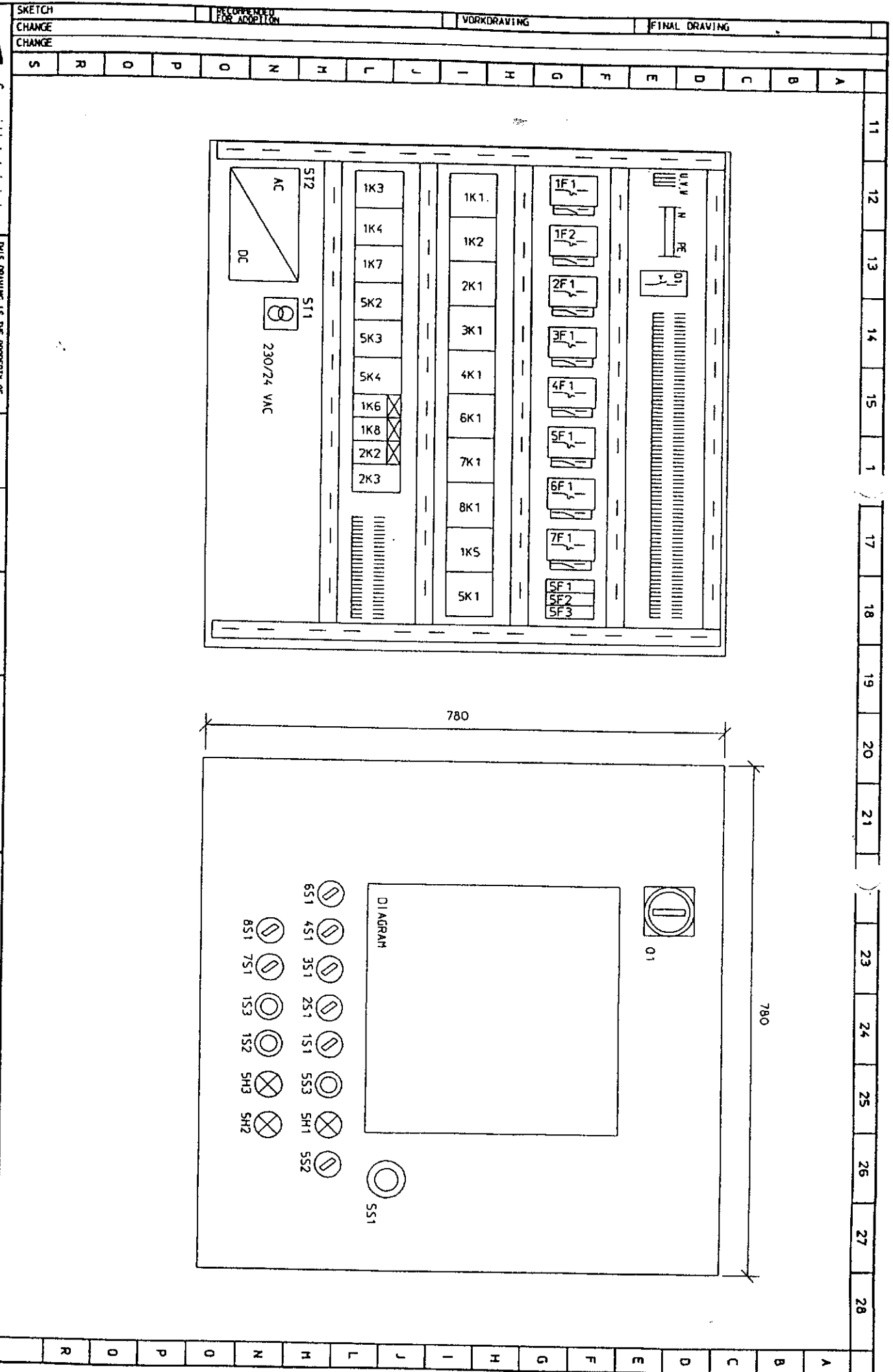
POZYCJA 61.8

SZAFA STERUJĄCA SYSTEMU ODWADNIANIA OSADU

DWT-ENGINEERING OY
TYÖ NRO 97022
SANDOMIERZ, POLAND

CONTROL BOX
SLUDGE TREATMENT UNIT:

Q1 ST1:F1, ST2:F1 5F1, 5F2 1F1 1F2, 3F1 4F1, 8F1 7F1 6F1 2F1 1K1-8K1 1K1-1K2,3K1,4K1 2K1 1K5, 5K1 1K6, 1K8, 2K2	MAIN SWITCH LINE PROTECTION FUSE LINE PROTECTION FUSE MOTOR PROTECTION SWITCH MOTOR PROTECTION SWITCH MOTOR PROTECTION SWITCH MOTOR PROTECTION SWITCH MOTOR PROTECTION SWITCH MOTOR PROTECTION SWITCH CONTACTOR AUXILIARY CONTACT CONTACTOR CONTACTOR RELAY TIME RELAY	KK19 3x80 C60N 1C6 C60N 1C10 GV2M04+GV2AE11 GV2M07+GV2AE11 GV2M08+GV2AE11 GV2M10+GV2AE11 GV2M14+GV2AE11 GV2M16+GV2AE11 LC1K0910P7 LA1KN22 LC1D1210P7 CA2DN31P7 STR2EK 230VAC	ENSTO TELEMEGANIQUE TELEMEGANIQUE TELEMEGANIQUE TELEMEGANIQUE TELEMEGANIQUE TELEMEGANIQUE TELEMEGANIQUE TELEMEGANIQUE TELEMEGANIQUE TELEMEGANIQUE TELEMEGANIQUE TELEMEGANIQUE TELE
SS1 1S1-8S1 5S2 1S2 1S3,5S3	EMERGENCY STOP SELECTION SWITCH START SWITCH START PUSH BUTTON PUSH BUTTON	XB2BS542+ZB2BS54+ZB2BZ102 XB2BD33+ZB2BD3+ZB2BZ103 ZB2BD8 ZB2BA333+ZB2BZ101 ZB2BA2+ZB2BZ103	TELEMEGANIQUE TELEMEGANIQUE TELEMEGANIQUE TELEMEGANIQUE TELEMEGANIQUE
5H1,5H2 5H3	INDICATOR LIGHT (WHITE) INDICATOR LIGHT (RED)	XB2BV67+ZB2BV07+ZB2BV6 XB2BV64+ZB2BV04+ZB2BV6	TELEMEGANIQUE TELEMEGANIQUE
1H3,1H4 1HH3 1H1,1H2,2H1-8H1 1HH1,1HH2,2HH1-8HH1	INDICATOR LIGHT (LED) INDICATOR LIGHT (LED) INDICATOR LIGHT (LED) INDICATOR LIGHT (LED)	RFL300G3 (GREEN) RFL300R3 (RED) RFL500G3 (GREEN) RFL500R3 (RED)	PEREL PEREL PEREL PEREL
	TERMINAL BLOCK	M4/6	ENTRELEC



SKETCH		RECOMMENDED FOR ADOPTION		WORKDRAWING		FINAL DRAWING	
CHANGE		CHANGE		CHANGE		CHANGE	
S	R	O	P	O	N	H	J
L	I	H	G	F	E	D	C
B	A	11	12	13	14	15	1
17	18	19	20	21	23	24	25
26	27	28					
A	B	C	D	E	F	G	H
I	J	L	H	I	J	N	O
P	O	R					

ENERTEL

Summittelutumissto
Popplanta 7, 23800 LATTILA
Puh. 02-8508400 Fax. 02-8508403

THIS DRAWING IS THE PROPERTY OF SUMMITTELUTUMISSTO ENERTEL. IT IS NOT TO BE USED, COPIED, REPRODUCED, OR TRANSMITTED IN ANY MANNER WITHOUT OUR WRITTEN CONSENT.

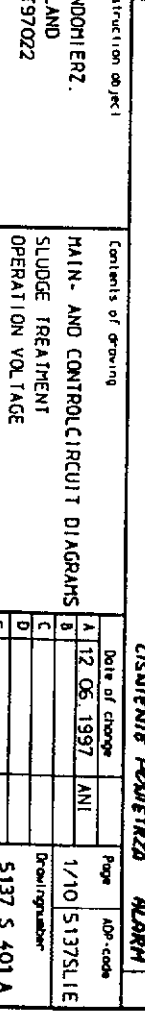
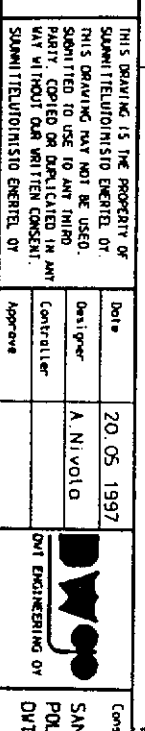
DATE: 18.08.1997
DESIGNER: J. PARTANEN
CONTROLLER: [blank]
APPROVE: [blank]

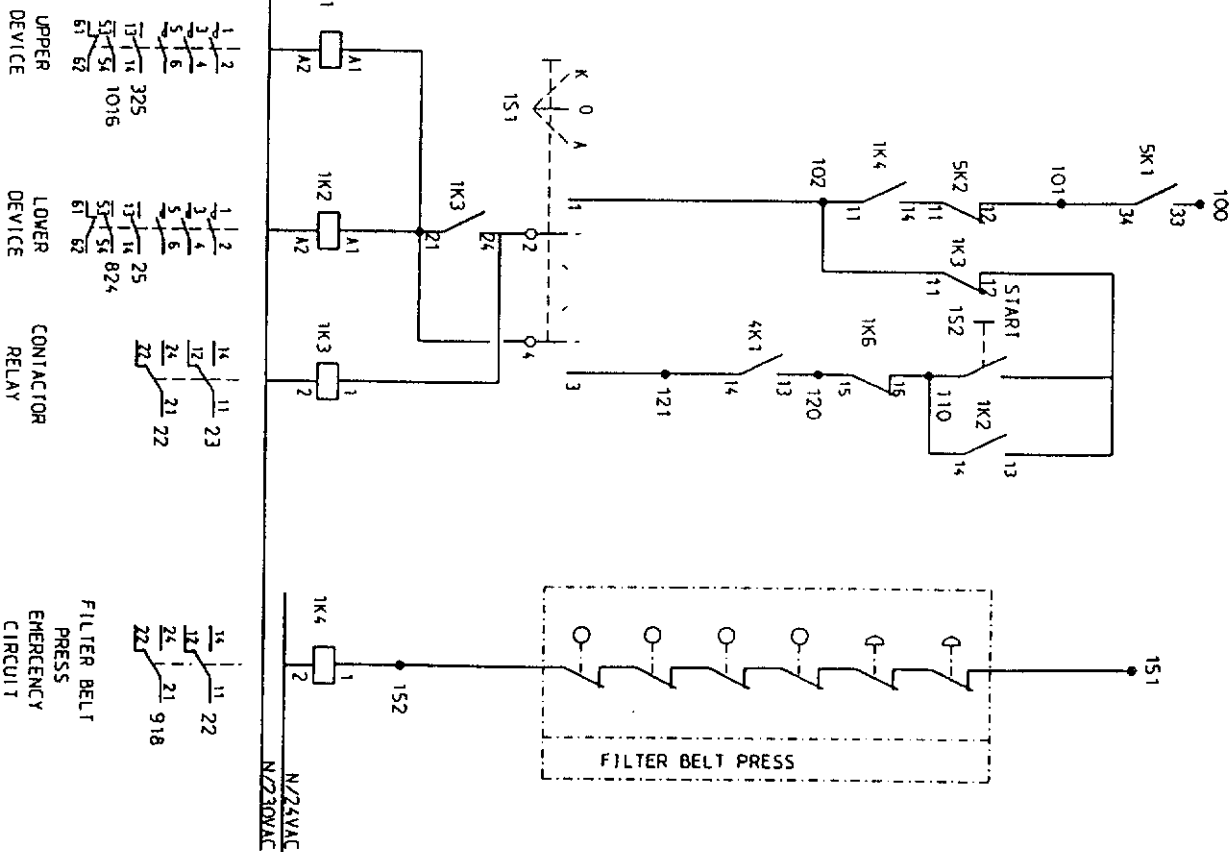
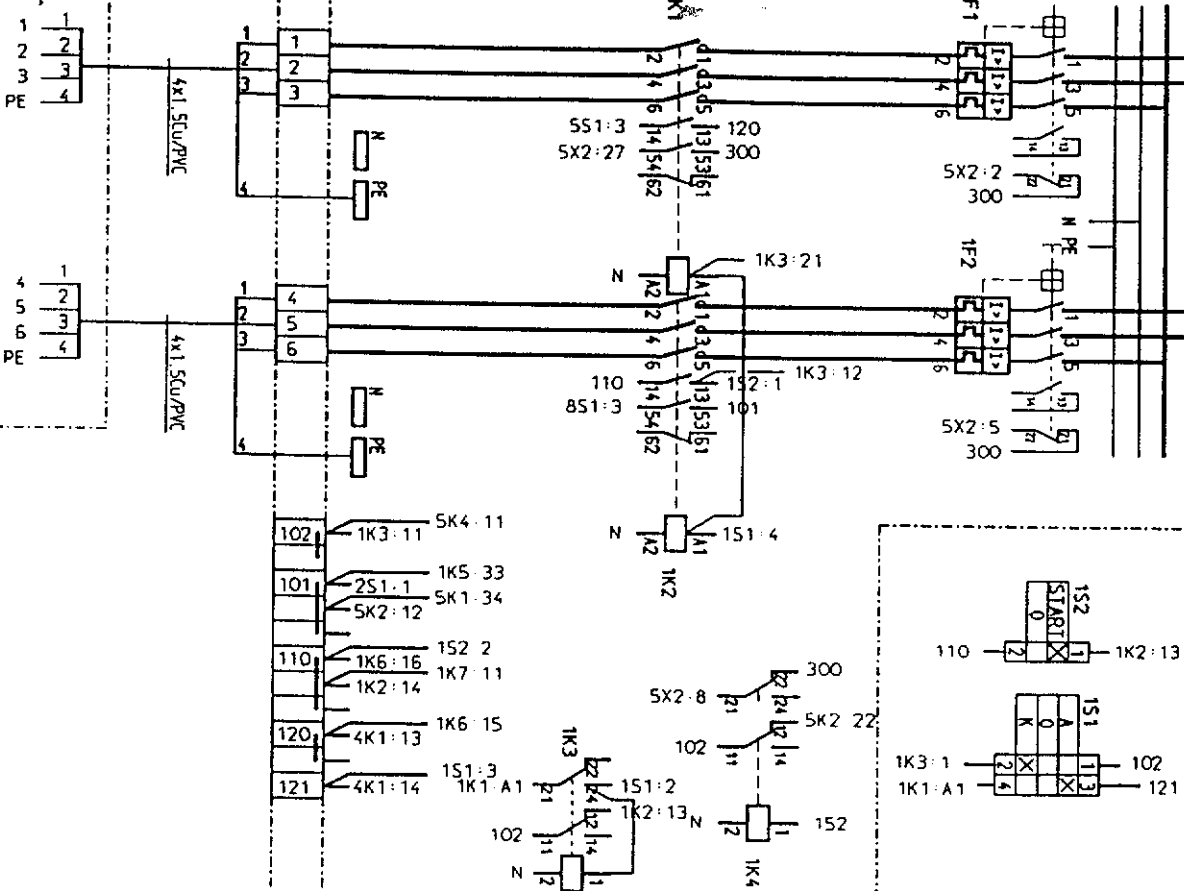
Construction object: SANDONIERZ, POLAND
DWT 97022

Contents of drawing: SLUDGE TREATMENT CONTROL BOX COMPOSITION

Date of change	Page	ADP-code
A	1/1	DWT97022
B		
C		
D		
E		

Drawings number: 5137 S 501





CHANGE

ENERTEL
Suunnittelutoimisto

Date	20.05.1997
Designer	A. N. V. O.
Controller	
Approve	



DVG
DVT ENGINEERING OY

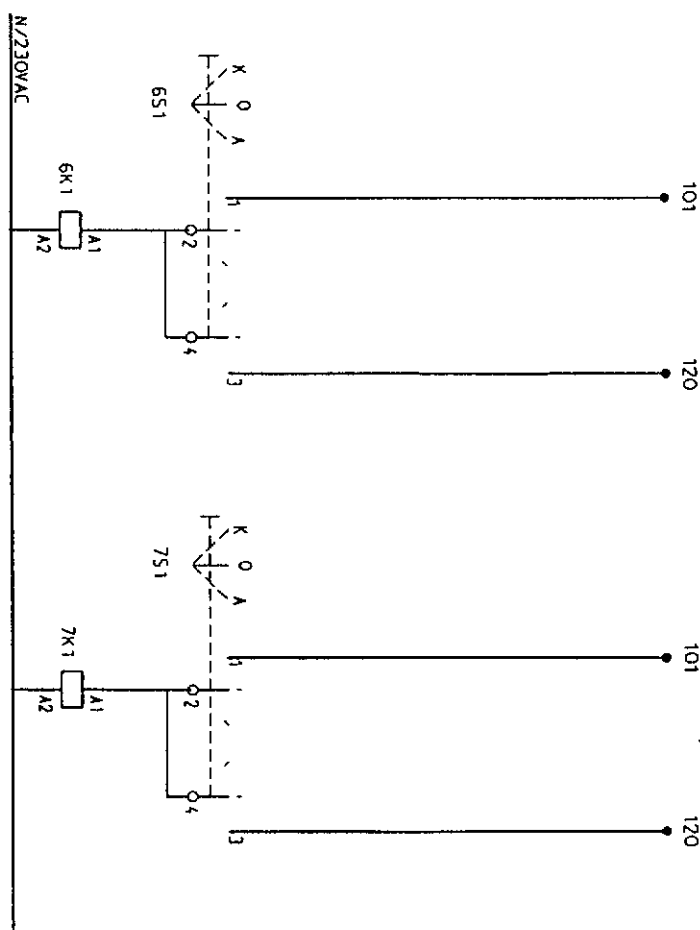
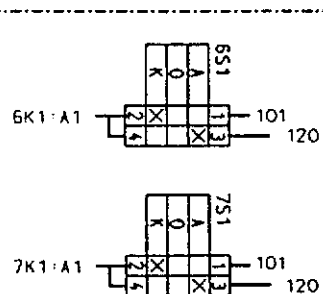
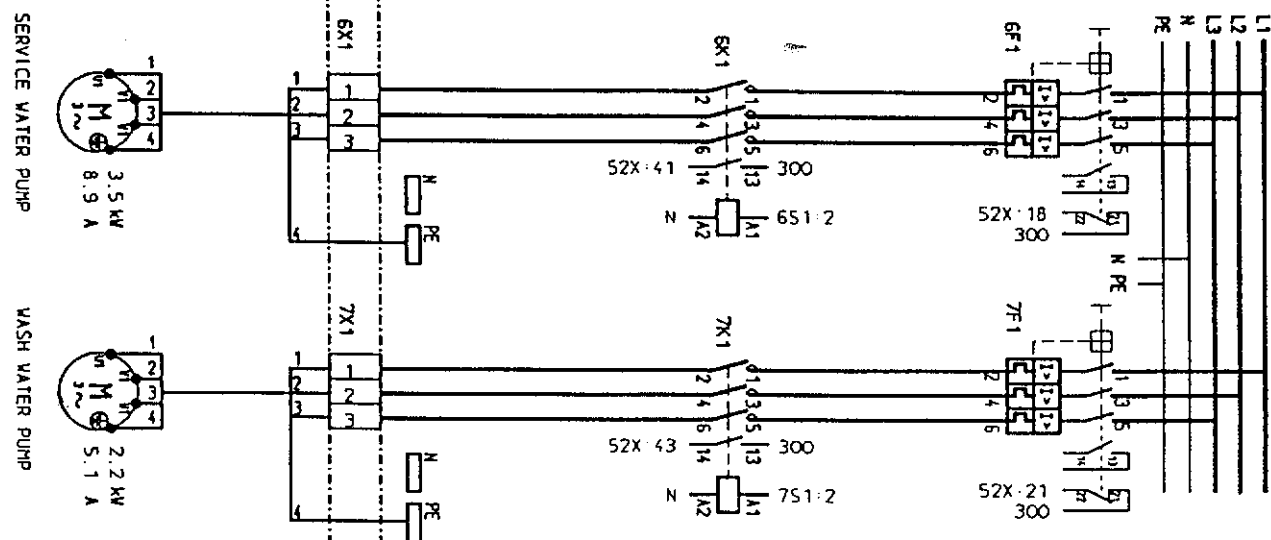
Construction objectives

Contents of drawing

MAIN- AND CONTROL CIRCUIT DIAGRAMS

Date of change		Page	APR-code
A	12.06.1997	ANI	5137SL1B
B		7	
C			
D			
E			

Drawn by number 5137 S 401 A



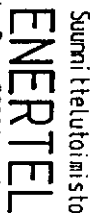
SERVICE WATER PUMP

WASH WATER PUMP

POHMA WOOD PLUMCES

CHANGE

1



THIS DRAWING IS THE PROPERTY OF
SLAMMITELEUTIOINISIO ENERTEL OY.
THIS DRAWING MAY NOT BE USED,
SUBMITTED TO USE TO ANY THIRD
PARTY, COPIED OR DUPLICATED IN ANY
WAY WITHOUT OUR WRITTEN CONSENT.
SLAMMITELEUTIOINISIO ENERTEL OY

Date	20.05.1997
Designer	A. Nivola
Controller	
Approve	



DUT ENGINEERING OF

SANDOMIERZ,
POLAND
DWT97022

Contents of drawing
ALARM LIGHTS
SLUDGE TREATMENT

Date of change		Page	Alt.-code
A 12.06.1997	ANI	9	5137SL
B			
C			
D			

Drucknummer

5137 C / 00

ALARM RELAY

UPPER UNIT OF THE PRESS
GÓRNA CZĘŚĆ PRASY

LOWER UNIT OF THE PRESS
DOLNA CZĘŚĆ PRASY

FILTER BELT PRESS **FILTER TAPING**
EMERGENCY STOP **STOP AWAIR.**
AND BELT LIMITS **TAPING**

SLUDGE PUMP POMPA OSADU

POLY DOSING PUMP
PDMPA DOZ. POLIMER

SCREW CONVEYOR
PODAJNIK ŚRUBOWY

SERVICE WATER PUMP

WASH WATER PUMP
POMPA PŁUCZĄCO

AIR COMPRESSOR
KOMPRESOR

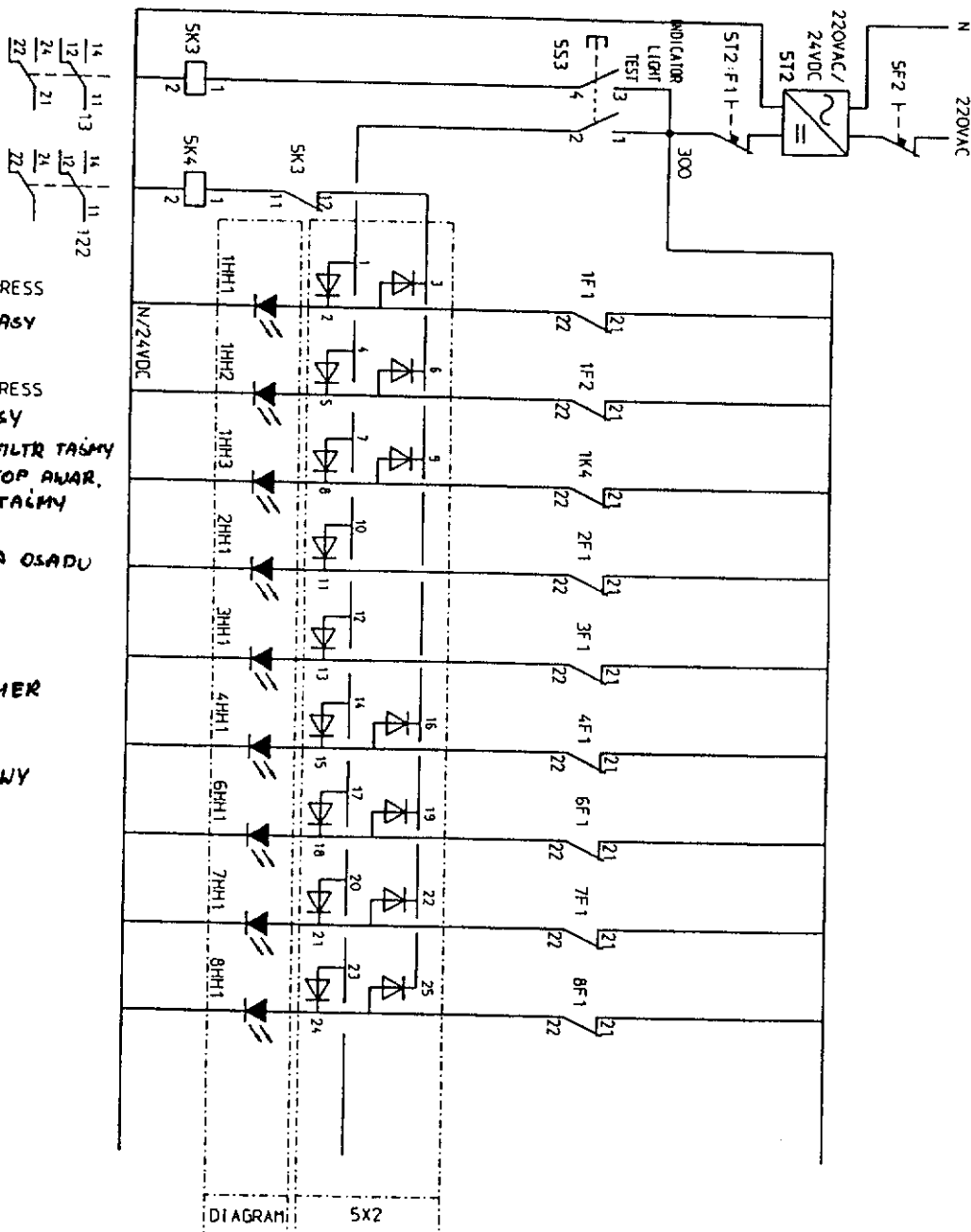


DIAGRAM 5x2

V	B	C	D	E	F	G	H	I	J	K	L	M	N	O	P	Q	R	S
---	---	---	---	---	---	---	---	---	---	---	---	---	---	---	---	---	---	---

SKETCH		RECOMMENDED FOR ADDITION		WORKDRAWING		FINAL DRAWING 31 07 1997		X	
CHANGE A) 12 06 1997. LISATTY VESI PUMPUT JA KOMPRESSORI									
CHANGE									
S	R	O	P	O	Z	H	J	I	H
G	E	E	O	C	B	A			
11	12	13	14	15	16	17	18	19	20
21	22	23	24	25	26	27	28		
A	B	C	D	E	F	G	H	I	J
K	L	M	N	O	P	Q	R	S	

UPPER UNIT OF THE PRESS
 Górna część prasy

LOWER UNIT OF THE PRESS
 Dolna część prasy

FILTER BELT PRESS
WATERVALVE
 Zawór wodny filtra taśmy

FILTER BELT PRESS
AIRVALVE
 Zawór powietrza

SLUDGE PUMP
 Pompa osadu

POLYMER DOSING PUMP
 Pompa doz. polimer

SCREW CONVEYOR
 Podaźnik ślimakowy

SERVICE WATER PUMP

WASH WATER PUMP
 Pompa wody płukającej

AIR COMPRESSOR
 Kompresor

Popilantie 7, 23800 LAITILA
Puh. 02-8506400 Fax 02-8506403

ENERTEL

Suunnittelutoimisto

THIS DRAWING IS THE PROPERTY OF
SUUNNITTELUOIMISTO ENERTEL OY.
SUBMITTED TO USE TO ANY THIRD
PARTY, COPIED OR REPRODUCED IN ANY
WAY WITHOUT OUR WRITTEN CONSENT.
SUUNNITTELUOIMISTO ENERTEL OY

Date	Designer	Controller	Approve
20.05.1997	A. NIIVOLA		

Construction object

SANDONIERZ.
POLAND
DW197022

Contents of drawing

INDICATOR LIGHTS
SLUDGE TREATMENT


Date of change	Page	ADP-code
A 12 06 1997 ANI	10	5137SLIE
B		
C		
D		
E		

Drawing number

5137 S 401 A


Page

10



ENERTEL
 Suomalainen laatu
 Pöytälamppien 7, 23800 LÄHTILÄ
 Puh. 922-506400 Fax 922-506403

Date	14.11.1994
Designer	A. NIVOLA
Controller	
Approve	



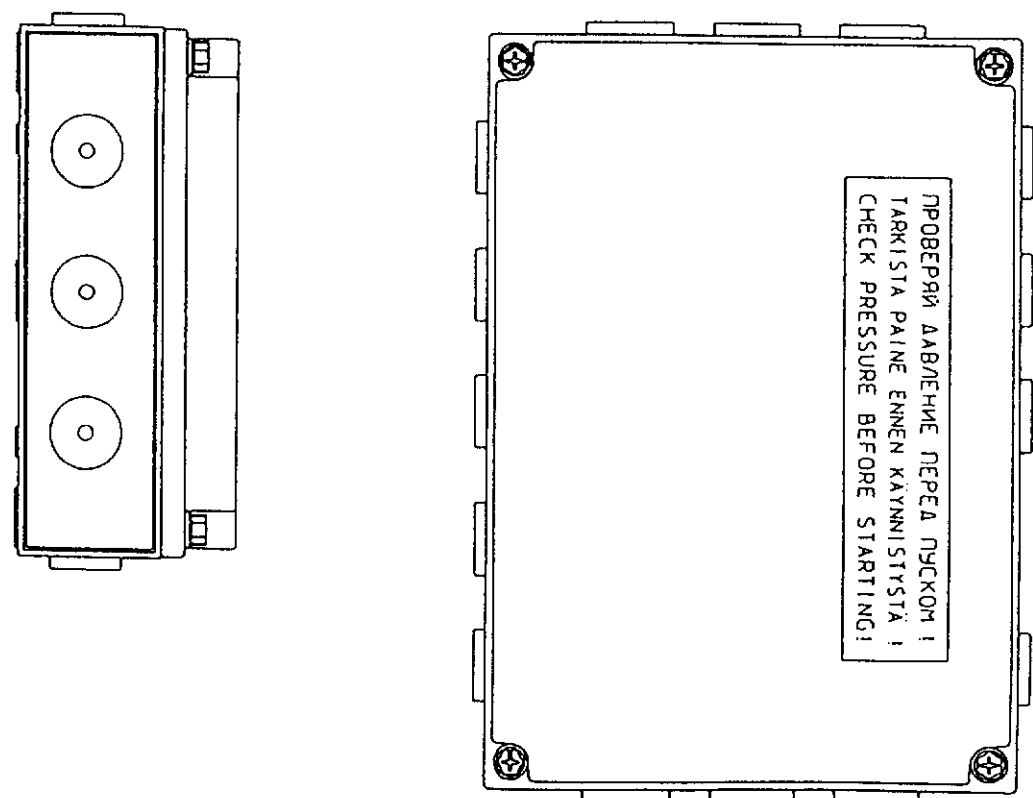
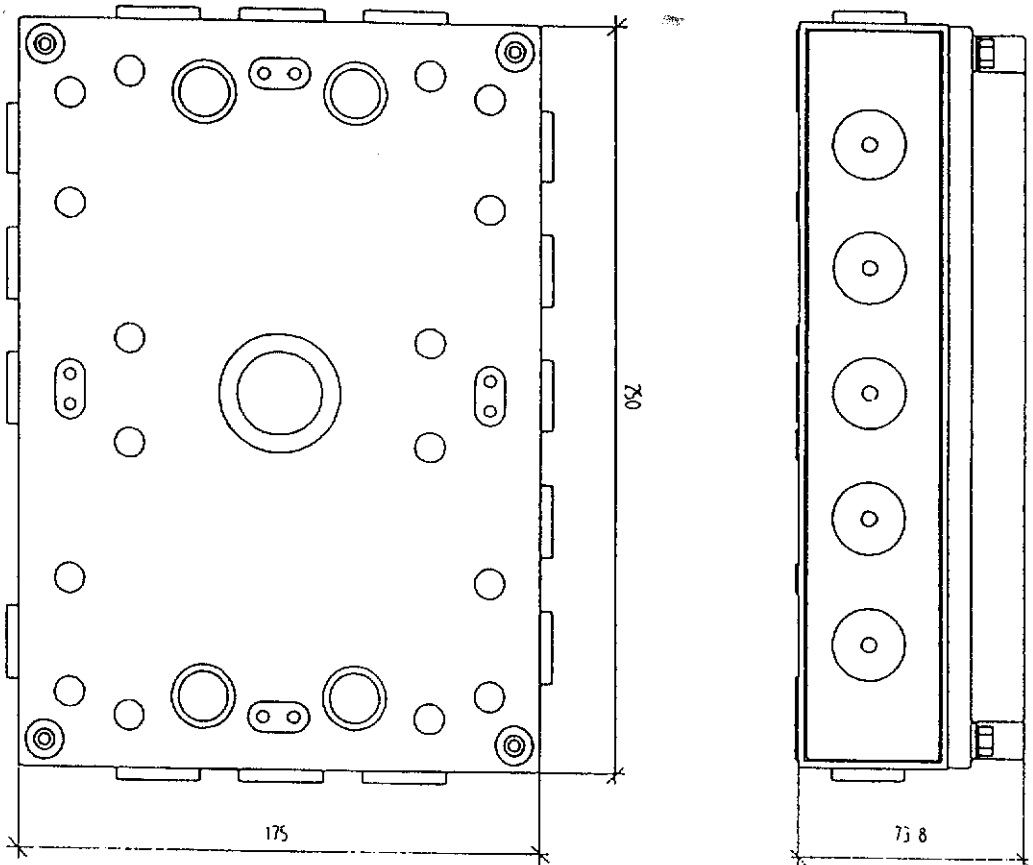
DWT
 DESIGN ENGINEERING LTD

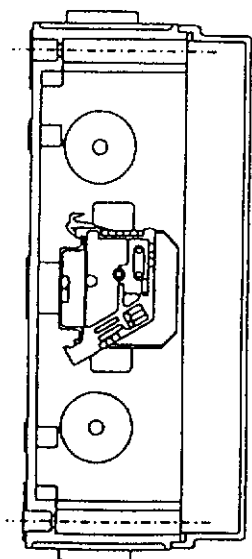
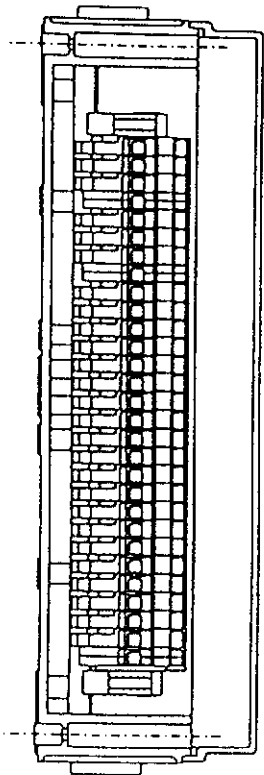
CONTINUATION OF OBJECT AND ADDRESS

CONTENTS OF DRAWING

KÄYNNÄN KOPPOKKA / KÄYNNÄN KOPPOKKA
 THEORETICAL BOX OF DEVA N-PO FILTER BELT PRESS
 DEVA N-PO SUODINLAATURI / SUODINLAATURI

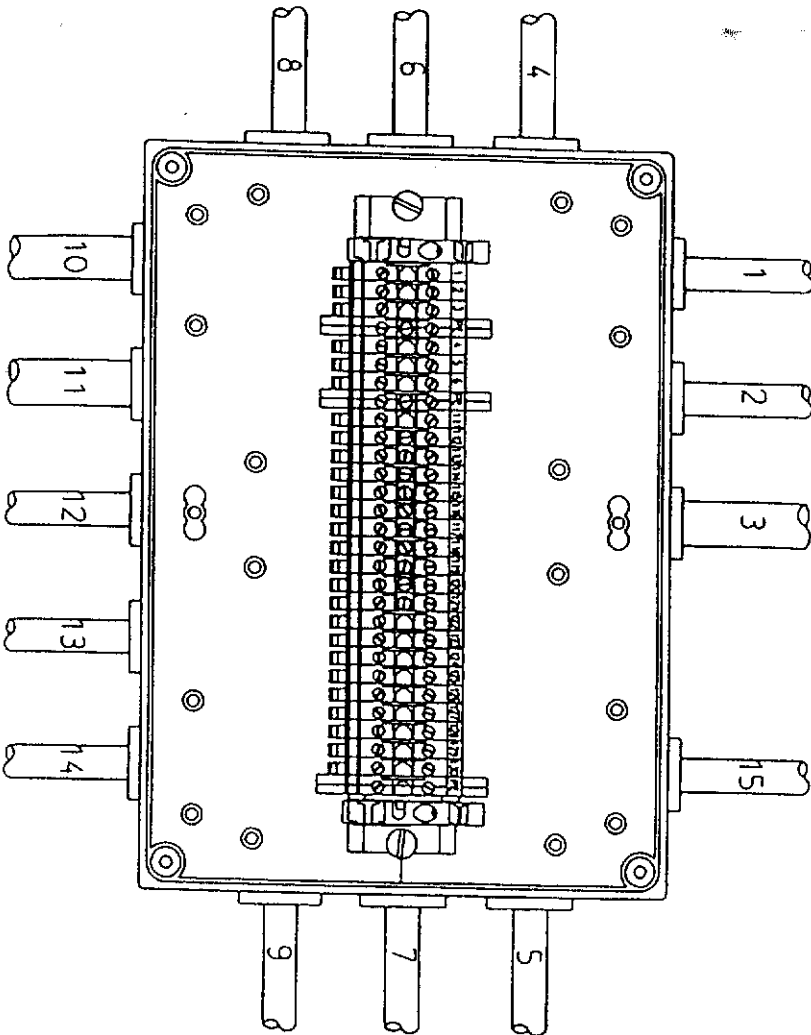
Date of change		Page	Idr. code
A		1/3	DVIRKXP157
B			
C			
D			
E			





KABE/IB:
CABLES:
KABELOINNIT:
KABLE:

- 1) PREDEWATERING ZONE MOTOR CABLE FROM CONTROL PANEL OF PROCESS ESTEROUSVIRILIAN STÖITÖ OHJUSKESKUSKSELIA
- 2) PRESSING ZONE MOTOR CABLE FROM CONTROL PANEL OF PROCESS PURISUSVIRILIAN STÖITÖ OHJUSKESKUSKSELIA
- 3) OPERATING DEVICE CABLE FROM CONTROL PANEL OF PROCESS ONE-ISAALLEIDEN KABELLI OHJUSKESKUSKSELIA
- 4) KROKKA ABAPPEHMIN "C100"
- 5) DREMOCKT STOP
- 6) KALASSEIS PAINUKSE KROKKA ABAPPEHMIN "C100"
- 7) DREMOCKT STOP
- 8) KALASSEIS PAINUKSE
- 9) LIMIT SWITCH OF PREDEWATERING ZONE
- 10) ESTEROUSVIRILIAN STÖITÖ OHJUSKESKUSKSELIA
- 11) LIMIT SWITCH OF PREDEWATERING ZONE
- 12) PURISUSVIRILIAN STÖITÖ OHJUSKESKUSKSELIA
- 13) LIMIT SWITCH OF PRESSING ZONE
- 14) PURISUSVIRILIAN STÖITÖ OHJUSKESKUSKSELIA
- 15) LIMIT SWITCH OF PRESSING ZONE
- 16) PURISUSVIRILIAN STÖITÖ OHJUSKESKUSKSELIA
- 17) BEPÄÄKÄ XIPPOK 180 /CHIO-OF-O OHJUSKESKUSKSELIA
- 18) MOTOR OF PREDEWATERING ZONE
- 19) ESTEROUSVIRILIAN STÖITÖ OHJUSKESKUSKSELIA
- 20) KROKKA XIPPOK 180 /CHIO-OF-O OHJUSKESKUSKSELIA
- 21) MOTOR OF PRESSING ZONE
- 22) PURISUSVIRILIAN STÖITÖ OHJUSKESKUSKSELIA
- 23) BOURNOM KROKKA
- 24) WASH WATER VALVE
- 25) VESIVENTTILILI
- 26) BOJASARJAN KROKKA
- 27) AIR VALVE
- 28) ILMAVENTTILILI
- 29) REPERINVALE/IN A+B/C/D/E
- 30) PRESSURE SWITCH
- 31) ILMAPIIRIKKIVÄIKKIN
- 32) MOONON KROKKA
- 33) SLUDGE CONTROL
- 34) VIERIKONTROLLI



Summilielutoministio
ENERTEL
Poppiantite 7, 22800 LAITILA
Puh. 922-506400 Fax 922-506403

Date	14.11.1994
Designer	A. Niivola
Controller	
Approve	

DWG
DWG ENGINEERING OF

Construction object and address

Contents of drawing
KOKKINEN KROKKA /CHIO-OF-O OHJUSKESKUSKSELIA
THERMAL BOX OF DEVA N-PO FILTER BELT PRESS
DEVA N-PO SUOJALAMPUKORISTINEN RIVILIIKINMOTILO

Date of change	Page	400-000
A	2/3	07/10/00-157
B		
C		
D		
E		

ВЕРХНЕЕ УСТРОЙСТВО ЛЕНТОНОГО НАБИРАТЕЛЯ
PREDEAVATERING ZONE
ESIEROTUSVIIRTA
STREFA NODNO

НОВОЕ УСТРОЙСТВО ЛЕНТОНОГО НАБИРАТЕЛЯ
PRESSING ZONE
PURISTUSVIIRAT
STREFA PRAVUTACA

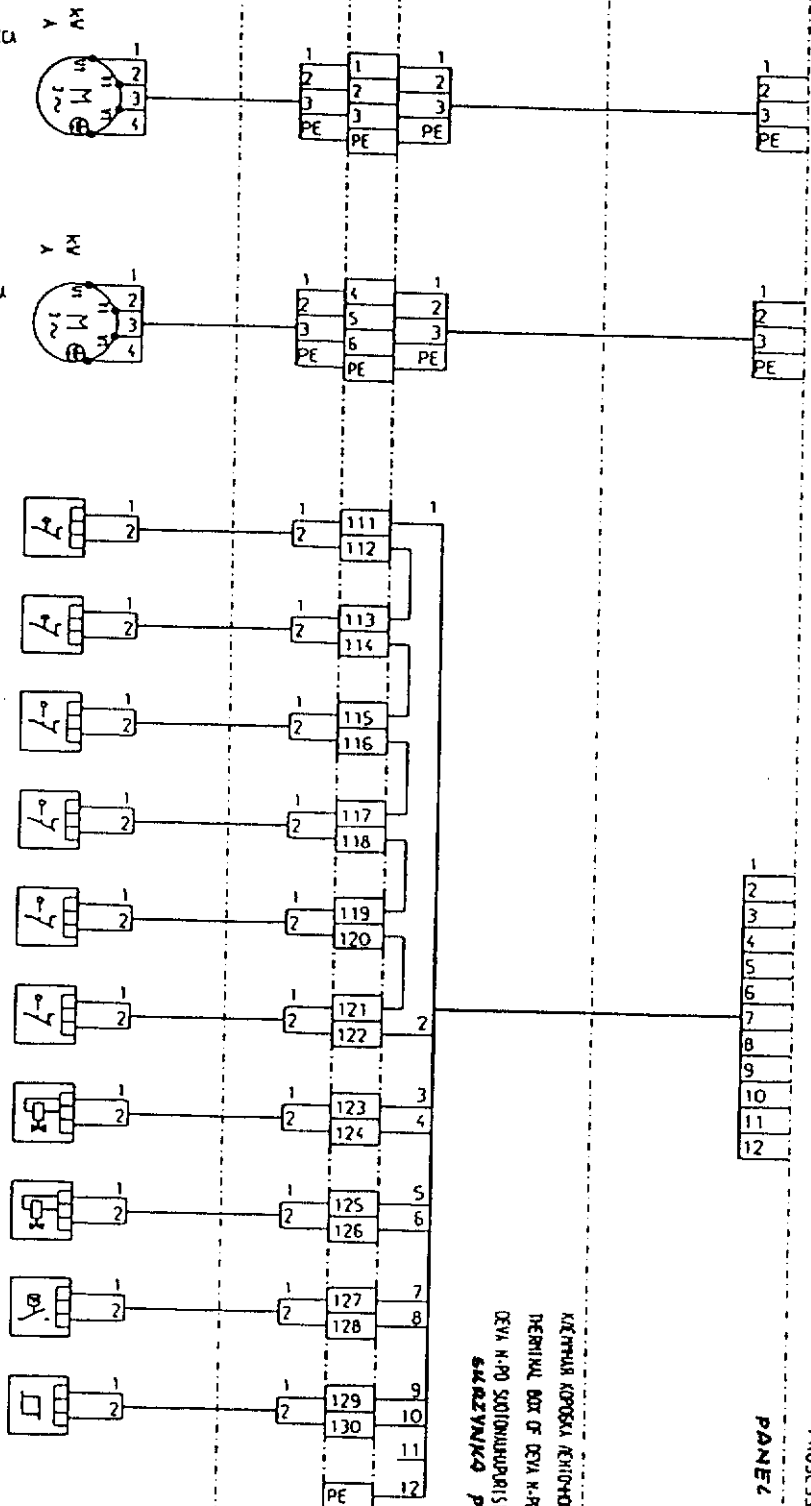
КНОПКА АВАРИЙНЫЙ 'СТОП'
EMERGENCY STOP
HÄTÄSEIS-PAINIKE
STOP ANAVYNY
КНОПКА АВАРИЙНЫЙ 'СТОП'
EMERGENCY STOP
HÄTÄSEIS-PAINIKE
STOP ANAVYNY

ПРЕДЕЛЬНАЯ ПЕРЕКЛЮЧАТЕЛЬ ЛЕНТЫ
LIMIT SWITCH
VIIRAN SIVURAJAKYTKIN
WYŁĄCZNIK KRAJCOVY
ПРЕДЕЛЬНАЯ ПЕРЕКЛЮЧАТЕЛЬ ЛЕНТЫ
LIMIT SWITCH
VIIRAN SIVURAJAKYTKIN

ПРЕДЕЛЬНАЯ ПЕРЕКЛЮЧАТЕЛЬ ЛЕНТЫ
LIMIT SWITCH
VIIRAN SIVURAJAKYTKIN
ПРЕДЕЛЬНАЯ ПЕРЕКЛЮЧАТЕЛЬ ЛЕНТЫ
LIMIT SWITCH
VIIRAN SIVURAJAKYTKIN

ВОЗДУШНЫЙ КЛАПАН
WASH WATER VALVE
VESIVENTTIILI
ZAVOR VODNY PLYUSACET
ВОЗДУШНЫЙ КЛАПАН
AIR VALVE
ILMAVENTTIILI
ZAVOR POWIETRZA

ПЕРЕКЛЮЧАТЕЛЬ ДАВЛЕНИЯ
PRESSURE SWITCH
PAINEKYTKIN
WYŁĄCZNIK CIŚNIENIOWY
ИЛОВОЙ КОНТРОЛЬ
SLUDGE CONTROL
LIETEKONTROLLI
KONTROLA OSADIN



КЭПТЕРА КОРБКА КЕНОТОНО НАБИРАТЕЛЯ N-PO
DETRIKAL BOX OF DEVA N-PO FILTER BELT PRESS
DEVA N-PO SUODINLAADISTUSRIKKE RIVILIIHILIMODELO
SZERINKA PRASY

ЦЕНТР УПРАВЛЕНИЯ ПРОЦЕССА
CONTROL PANEL OF PROCESS
PROSESSIN OHJUSKESKUS
PANEL KONTROLIN PROSESSU